



**Conference:** October 3-5, 2022  
**Solution Center:** October 3-4, 2022  
Orlando, FL  
[ahe.org/ahe-exchange-conference](https://ahe.org/ahe-exchange-conference)

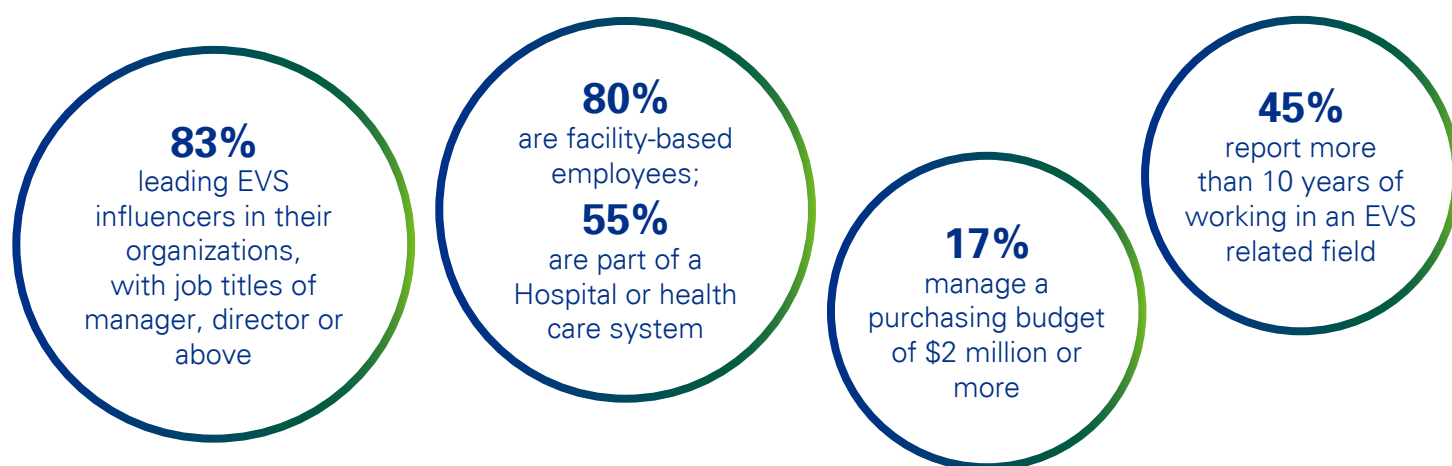


# Showcase Your Products and Services at AHE Exchange 2022!

AHE Exchange 2022 is set to be an exclusive, premier event for health care environmental services professionals and those involved in the environment of care. Inquire today to check on the key qualifications to reserve a Solution Center spot in Orlando, October 3-5, 2022. Showcase your company in an intimate face-to-face setting and form deeper connections with EVS buyers and influencers. As a Solution Center participant you'll also:

- Experience exclusive access to EVS decision-makers through 6+ hours of dedicated exhibit time
- Position your organization as a premier thought leader supplier of EVS solutions and innovations
- Discuss ideas, share knowledge and discover solutions with industry leaders
- Receive 2022 points toward priority space selection for Exchange 2023

## Attendee Profile



## Health Care Systems and Facilities in Attendance at Past Events

*\*Not all facilities and systems in attendance represented below*

- |   |   |  |
|---|---|--|
| <ul style="list-style-type: none"><li>• Adventist Health System</li><li>• Advocate Health</li><li>• Appalachian Regional Healthcare System</li><li>• Baylor Scott &amp; White Health System</li><li>• Beacon Health</li><li>• Catholic Health Initiatives</li><li>• CentraCare Health</li><li>• Children's Hospital of Philadelphia</li><li>• Cottage Health</li><li>• Dartmouth Hitchcock Medical Center</li><li>• Department of the Navy, Bureau of Medicine and Surgery, Navy Medicine West</li><li>• Emory Healthcare</li><li>• Geisinger Health</li><li>• Gundersen Health System</li><li>• Hackensack Meridian Health</li><li>• HarrisHealth System</li><li>• HCR Manorcare</li></ul> | <ul style="list-style-type: none"><li>• Henry Ford Health System</li><li>• Indian Health Services</li><li>• Johns Hopkins Health System</li><li>• Kaiser Permanente</li><li>• Kettering Health Network</li><li>• Legacy Health System</li><li>• Mass General Hospital / Partners</li><li>• Mayo Clinic Health Systems</li><li>• Memorial Sloan Kettering Cancer Center</li><li>• Mercy Health Network</li><li>• New York Presbyterian</li><li>• Northside Hospital</li><li>• Northwell Health System</li><li>• Northwestern Medicine</li><li>• Norton Sound Health Corporation</li><li>• Ohio State Wexner Medical Center</li><li>• OSF HealthCare</li><li>• Palomar Health</li></ul> | <ul style="list-style-type: none"><li>• Parkview Health System</li><li>• PRIME HEALTH CARE</li><li>• Sanford Health</li><li>• Shriners Hospitals for Children</li><li>• Trinity Healthcare</li><li>• University Hospitals, Cleveland, Ohio</li><li>• University of California Health</li><li>• University of Iowa Hospitals and Clinics</li><li>• University of Utah Hospital</li><li>• University of Vermont Healthcare Network</li><li>• UPMC Health System</li><li>• Utah Health</li><li>• UW Health</li><li>• Veterans Health Administration</li><li>• Yale New Haven Health</li><li>• Yukon Kuskokwim Health Corporation</li><li>• Yuma Regional Medical Center</li></ul> |
|---|---|--|



→ **BECOME AN EXHIBITOR**

# Solution Center

More than a trade show, the AHE Exchange Solution Center focuses on making connections and providing solutions to the most pressing everyday problems in the health care environment. Reserve your booth today and be part of the most exclusive health care EVS event of the year. Don't delay as exhibit space is very limited and will sell out!

## Exhibit Booth Packages

	<b>Standard</b> <b>\$3,100</b> <i>(Limit 60)</i>	<b>Premium</b> <b>\$3,800</b> <i>(Limit 30)</i>
10'x10' Booth Space <i>(Includes 8' back drape, 33" side drape, 7"x44" ID sign)</i>	•	•
(2) Full Conference Registrations	•	•
Opportunity to Purchase Additional Full Conference Exhibitor Badges at a Steep Discount of \$199 (\$599 value)	•	•
Company Listing in the Online Directory and Mobile App	•	•
Search for Solutions (formerly Passport to Prizes; \$750 value)		•
Attendee Tote Bag Insert (\$750 value)		•

**Corner Fee**  
\$250  
**Additional 10'x10'**  
\$3,100 each

→ **Submit a contract** or connect with Sue Griffin at 312-673-5586 or [sgriffin@smithbucklin.com](mailto:sgriffin@smithbucklin.com) to reserve a booth.

## Exhibitor Hours

### Sunday, October 2

8:00am – 4:00pm  
*Set-up & Move-in*

### Monday, October 3

8:00am – 2:00pm  
*Set-up & Move-in*  
  
3:00pm – 6:00pm  
*Solution Center Open & Reception*

### Tuesday, October 4

10:45am – 2:00pm  
*Solution Center Open & Lunch*  
  
2:00pm – 6:00pm  
*Teardown & Move-out*

## Who Should Exhibit?

Companies who provide solutions targeting:

- Bed, patient and equipment tracking
- Carpet care
- Carts and equipment
- Chemical management systems
- Cleaning chemicals & supplies
- Consulting services
- Disaster response
- Disinfectants
- EPA hospital-grade disinfectants
- Flooring & floor finishes
- Furniture
- Grounds & landscaping
- Hand soaps & gels
- Infection prevention control
- Integrated pest management
- Interior design
- Interior finishes
- Laundry
- Medical waste
- Microfiber technologies
- Odor control
- Paper products
- Parking & valet services
- Productivity/staffing
- Quality management
- Restroom supplies
- Sharps containers & disposal
- Textile care
- Training programs
- Transport management
- Uniforms
- Waste management & recycling
- Window treatment

# Exchange Sponsorship Levels

Exclusive to Exhibitors, Exchange Sponsorship recognizes organizations that invest in the conference at a higher level. Choose from our extensive menu of speaking, engagement, branding and advertising opportunities to build a custom sponsorship program and activate additional benefits below.

## Silver Level

**\$5,000 - \$9,999**

- Logo on Exchange 2022 website and mobile app with hyperlink
- Logo on sponsorship signage and in general session walk-in/walk-out slides at Exchange 2022
- Logo recognition in the September 15 issue of EVS News
- Sponsor Badge Ribbon for company personnel
- Additional priority points towards 2023 Exhibit Booth Selection



## Gold Level

**\$10,000 - \$14,999**

- Silver benefits, plus:
- One (1) additional Exhibitor Full Conference Badge



## Platinum Level

**\$15,500 and up**

- Gold benefits, plus:
- Inclusion in Exhibitor Preview Email Blast (a \$2,500 value)
- One (1) mobile app push notification



**Submit a contract** or connect with Sue Griffin at 312-673-5586 or [sgriffin@smithbucklin.com](mailto:sgriffin@smithbucklin.com) to reserve space.

# Speaking and Engagement Opportunities

## Sunday Welcome Reception

**\$16,000 | Exclusive**

AHE Exchange opens with an evening reception! You and your company representatives can welcome all attendees, including board of directors, the Exchange planning committee, AHE members, colleagues, and friends!

**Key Benefits:** Your company logo and acknowledgment in pre-conference marketing materials, as well as on the reception table tents and signage. Opportunity to address attendees and provide your materials or giveaways! Sponsor recognition/logo will also be in the conference Agenda, mobile app push notifications and additional conference materials referencing reception.

## Monday Solution Center Reception

**\$20,000 | Exclusive**

Hors d'oeuvres and beverages during the opening of the Solution Center (exhibit hall).

**Key Benefits:** Your company logo and acknowledgment in pre-conference marketing materials Sponsor will "cut the ribbon" and address the crowd to announce the opening of the Solution Center. Reception food and beverages will be strategically placed near the your booth, and your company logo will appear on mints and napkins. Includes 100 drink tickets for wine and beer. Signage acknowledgment. Also includes recognition in mobile app and any additional conference materials referencing the reception.

## Monday or Tuesday Sunrise Session

**Monday: \$20,000 | Exclusive**

**Tuesday: \$15,000 | 2 Available**

Reach health care environment service professionals outside of the Solution Center. These 60-minute sessions will be open to all registrants and scheduled on Monday and Tuesday mornings.

**Key Benefits:** Your company logo and acknowledgment in pre-conference marketing materials and included in the Conference Agenda, mobile app, push notifications, etc. Standard AV set + seating for up to 200 attendees with breakfast or Lunch provided to your attendees. Recording (audio + PowerPoint) available on year-round at AHE On-

Demand Webinars. Promotion within EVS News once a quarter (circ. 30,000). Also includes a copy of session recording for you to use in your own promotions.

## Monday Lunch & Learn

**\$15,000 | 2 Available**

Share your knowledge by presenting a 60-minute education program. A Lunch & Learn is a great way to showcase your latest innovations and position your company as a trusted expert in the eyes of your clients and prospects.

**Key Benefits:** Your company logo and acknowledgment in pre-conference marketing materials and included in the Conference Agenda, mobile app, push notifications, etc. Standard AV set + seating for up to 200 attendees with breakfast or Lunch provided to your attendees. Recording (audio + PowerPoint) available on year-round at AHE On-Demand Webinars. Promotion within EVS News once a quarter (circ. 30,000). Also includes a copy of session recording for you to use in your own promotions.

## Tuesday Lunch

**\$15,000 | Exclusive**

Partner with AHE and co-sponsor lunch in the Solution Center (exhibit hall).

**Key Benefits:** Sponsor logo will appear on mints and napkins. Your marketing collateral may be distributed at each lunch table or as a chair drop. Also includes one (1) 15-minute Learning Bite Session in the Solution Center on Tuesday, a push notification, recognition in mobile app and any additional conference materials referencing lunch and signage acknowledgment.

## Conference within a Conference

**\$12,500 | Exclusive**

Wednesday 1/2 day all conference general session event with engaging thought leader speakers.

**Key Benefits:** Ability to address attendees face-to-face (30-second welcome). Promotional items may be distributed. Recognition in mobile app and any additional conference materials referencing session. Signage acknowledgment.

**Submit a contract** or connect with Sue Griffin at 312-673-5586 or [sgriffin@smithbucklin.com](mailto:sgriffin@smithbucklin.com) to reserve space.

# Speaking and Engagement Opportunities

## ● Opening Keynote Session

**\$7,500 | Exclusive**

Exchange opening session presentation.

**Key Benefits:** Introduce speaker and address attendees. Opportunity to provide a chair drop, plus a 60-second commercial that plays during session. Sponsor to provide an mp4 file to AHE (content is subject to approval). Recognition in mobile app and any additional conference materials referencing session.

## ● Solution Center Bar Cart

**\$5,000 | 5 Available**

Be a great host. Provide a beer/wine bar near your booth during the Monday Solution Center Reception.

**Key Benefits:** Logo recognition on a tabletop sign and a 2' x 4' decal on the front of the bar. Includes 100 drink tickets for wine and beer. Recognition in mobile app and any additional conference materials referencing bar cart.

## ● General Sessions

**\$5,000 | 7 Available**

Position your organization as a thought leader by sponsoring one of the AHE concurrent education sessions. Topics include leadership, staffing, disinfection and more. [View complete list.](#)

**Key Benefits:** Introduce speaker and address attendees. Includes 30-second commercial that plays during session. Sponsor to provide an mp4 file to AHE (content subject to approval). Recognition in mobile app and any additional conference materials referencing session.

## ● Learning Bite Session

**\$1,500 | 10 Available**

Speak directly to attendees and showcase your latest products and solutions in a 15-minute presentation from the Solution Center Stage.

**Key Benefits:** Promotion prior to Exchange 2022 by AHE. Seating, podium, laptop, speakers and a monitor are provided.

## ● Search for Solutions

**\$750 + prize | 10 Available**

Drive traffic to your booth by stamping attendees' game cards as they stop by to ask a question about your company. Participants must provide a prize of \$100 or greater to be raffled off Tuesday afternoon. Attendees must be present to win.

**Key Benefits:** Recognition in mobile app and any additional conference materials referencing game. Signage acknowledgment.

## ● Pre-Conference Training Sessions

**Starting at \$4,500 | Limit one sponsor per course**

Present to key segments of the AHE audience during our popular Signature Programs and pre-conference courses taking place September 29 - October 2. Estimated attendance 20-40 attendees per program.

**Key Benefits:** Opportunity to speak for 30 minutes during lunch. Recognition in mobile app and any additional conference materials referencing session. Signage acknowledgment.

- [CMIP](#): **\$5,000**
- [CSCT](#): **\$5,750**
- [CHESP](#): **\$5,000**
- [Up Your Training Game: Secrets and Best Practices for Training Success](#): **\$4,500**

Breakfast speaking opportunities also available. Call for details.

---

**Submit a contract** or connect with Sue Griffin at 312-673-5586 or [sgriffin@smithbucklin.com](mailto:sgriffin@smithbucklin.com) to reserve space.



# Branding and Advertising Opportunities

## ● Wi-Fi

**\$13,800 | Exclusive**

Be the lifeline to connectivity for 500+ attendees.

**Key Benefits:** Logo on splash page, custom password, push notification. One (1) 60-second video during the opening keynote. Recognition in mobile app and any additional conference materials referencing Wi-Fi. Signage acknowledgment.

## ● Mobile App

**\$10,000 | Exclusive**

Sponsor the official mobile app that will be used by attendees throughout AHE Exchange.

**Key Benefits:** Take advantage of push notifications and promoted posts to drive traffic to your booth. Recognition on the home screen and an exclusive section in the mobile app. Signage and recognition in conference materials referencing mobile app.

## ● Conference Bag

**\$10,000 | Exclusive**

Your logo will be featured alongside AHE's logo on the conference bags. Includes an opportunity to provide a bag insert (subject to approval).

## ● Lanyards

**\$10,000 | Exclusive**

Place your logo on the Exchange lanyards that will be worn by all attendees.

## ● Solution Center Reception Giveaway

**\$1,500 | 5 Available**

During the Solution Center Reception on Monday evening, attendees who visit your booth can get a chance to win a \$500 prize from AHE. Attendees must be present to win.

## ● Onsite Daily E-newsletter

**Starting at \$900**

Promote your products and services with an ad in the daily emails that are sent out every day of the conference to 2,700+ AHE members and attendees.

## Onsite Daily E-newsletter Ad Options:

- Top Leaderboard: **\$2,000**
- Sponsored Content: **\$2,000**
- Middle Rectangle: **\$1,300**
- Lower Rectangle: **\$900**

## ● Session Commercial

**Opening Keynote: \$3,000 | 2 Available**

**General Session: \$1,500 | 7 Available**

Provide a video commercial that plays during the opening keynote (60-seconds) or a general session (30-seconds). Sponsor to provide an mp4 file to AHE (content subject to approval).

## ● Floor Cling

**\$2,500 | 10 Available**

Print your unique artwork and message on a 5' x 5' floor cling that can be placed in a high-traffic area in the hotel venue.

## ● Exhibitor Preview Email

**\$1,500 | 5 Available**

Showcase your product, highlight your presentation, or simply invite attendees to visit your booth by including your logo/image, booth number, and a 30-word listing in the official pre-conference Exhibitor Preview Email. All pre-registered attendees and AHE members will receive this sneak peek one week prior to Exchange 2022.

## ● Billboard Ad

**\$1,000 | 10 Available**

Reach all attendees by adding your message on a 4' x 8' double-sided billboard that will be placed by the escalators leading to the General Sessions and breakouts.

## ● Bag Insert

**\$750 | 10 Available**

Promote a new product by providing a promotional piece in the conference bags and maximize exposure to every attendee.

**Submit a contract** or connect with Sue Griffin at 312-673-5586 or [sgriffin@smithbucklin.com](mailto:sgriffin@smithbucklin.com) to reserve space.



The Association for the Health Care Environment (AHE) is a Professional Membership Group of the American Hospital Association. AHE represents a broad and diverse network of more than 2,300 decision making professionals dedicated to pathogen free, healing environments across all care settings.



#### **AHE Sales Contact**

Sue Griffin

312-673-5586 / [sgriffin@smithbucklin.com](mailto:sgriffin@smithbucklin.com)

[Submit a Booth Contract](#) | [Submit a Sponsorship Contract](#)

[ahe.org/ahe-exchange-conference](http://ahe.org/ahe-exchange-conference)